



High Pressure Models



R6PS SERIES

MODEL R6PS3110M (STAGED)

MAX. PRESSURE – 170"H₂O (60 Hz), 145"H₂O (50 Hz)
MAX. VACUUM – 130"H₂O (60 Hz), 110"H₂O (50 Hz)
MAX. AIR FLOW – 280 CFM (60 Hz), 230 CFM (50 Hz)

PRODUCT FEATURES

- Rugged construction, low maintenance
- Oilless operation
- UL and CSA approved motor with permanently sealed ball bearings
- Aluminum impeller; cast iron cover and housing
- Includes muffler AJ121F
- Smaller and less costly than two motor-mounted units

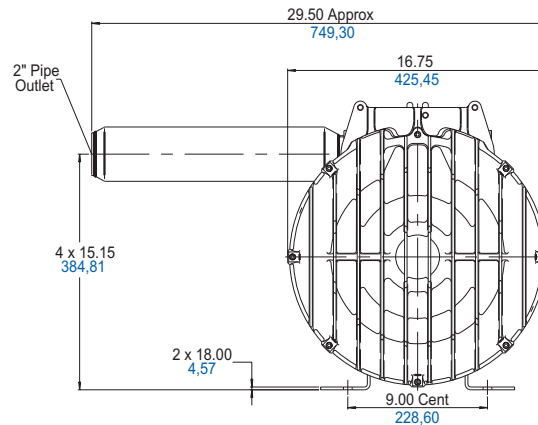
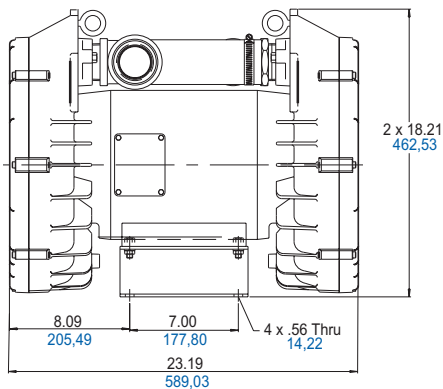
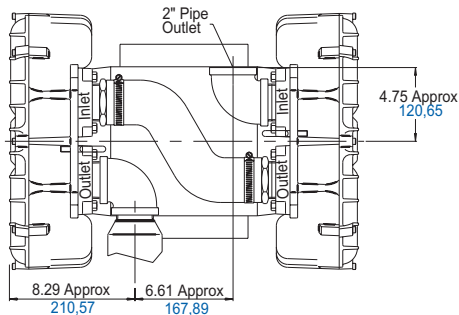
RECOMMENDED ACCESSORIES

- Pressure gauge AE133A
- Inlet filter AJ126F (pressure)
- Vacuum gauge AE134
- Inline filter AJ151H (vacuum)
- Relief valve AG258
- Liquid separator RMS300 (vacuum)

Product Dimensions (in. mm)

Note: Unit must be mounted with shaft horizontal.

TOP VIEW





Product Specifications

MODEL NUMBER		R6PS3110M
Motor Enclosure		OPEN
HP/kW	60 Hz	11/8,2
	50 Hz	7/5,2
Voltage	60 Hz	208-230/460-3
	50 Hz	220/380-415-3
Amps	60 Hz	36-35/17.5
	50 Hz	32/15.5-13
Starting Amps	60 Hz	181 @ 460V
	50 Hz	176 @ 380V
Insulation Class		F
Recommended NEMA Starter Size		2/2
Net Weight (lbs/kg)		309/140

Product Performance

